



Disposable Lab Coat

Polypropylene non-woven

Code: L103HL-45

FEATURES & BENIFITS

- Low-lint non-woven polypropylene fabric SMS
- Lightweight for breathability

APPLICATIONS

- For general healthcare/hygiene use
- For food/light industrial environments

SPECIFICATIONS

Code:	L103HL-45
Name:	Disposable lab coat
Material:	Polypropylene non-woven
Design Features:	hip length with knitted collar & cuffs with 5 studs with 2 pockets
Seam type:	3-thread over-lock stitched seam
Size:	M-XXL

Quality certificates

- ISO 13485.
- ISO 9001.

Product classification

- PPE Regulation (EU) 2016/425 Category I.
- MDR Regulation (EU) 2017/745 CLASS I.

AVAILABLE IN

Code	Weight	Size	Color	UOM	Package	QTY PER CTN	CTN Size (CM)	G/W (KGS)
L103HL-45	45gsm	M-XXL	● ● ●	Piece	10	100	52*30*48	12

STORAGE AND DISPOSAL

- Store in dry, clean conditions in original packaging.
- Store away from direct sunlight, sources of high temperature, and solvent vapors.
- Store within the temperature range 15°C to 25°C (58°F to 78°F) and with relative humidity below 80%.
- Shelf life is 60 months from date of manufacture when stored as stated above.
- Replace garments if damaged, heavily contaminated or in accordance with local work practice.
- Electrostatic properties may be decay by wear, tear, contamination and time. Double check before use the garment.
- Handle and dispose of contaminated garments with care and in accordance with national regulations.

CARE GUIDELINE

Do not wash	Do not dry	Do not bleach	Do not iron	Do not dry clean	Flammable fabric



+86 27 85668609

www.lioncare.net

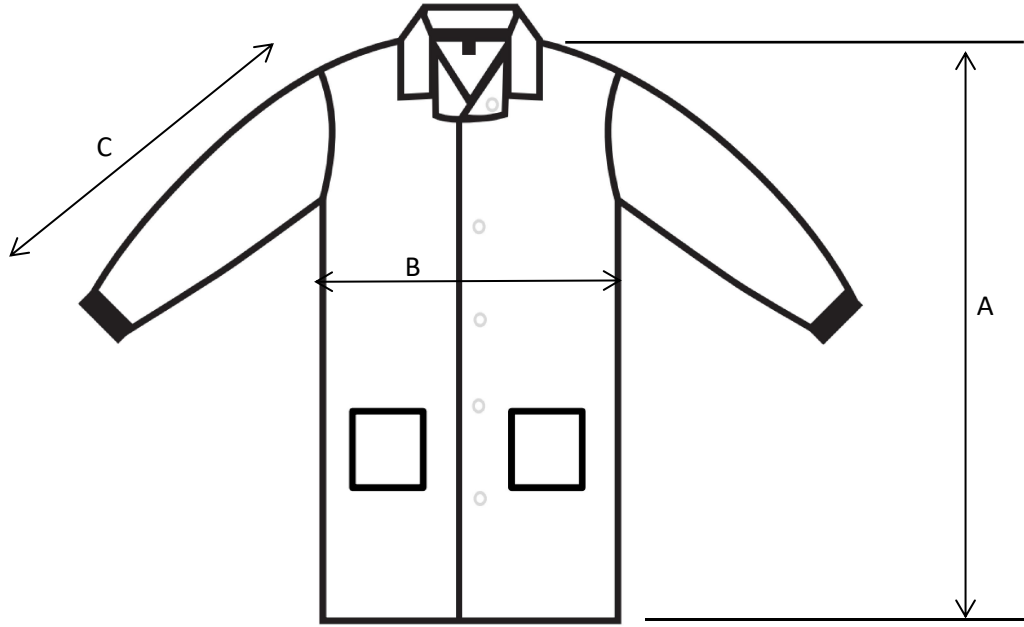
info@lioncare.net



This Technical Data Sheet (TDS) is designed and produced by Hubei Lioncare Protective Products Co., Ltd. cover under the intellectual property law. Do not publish without written permission from us. The Information is subject to change without notice and replaces all data sheets previously supplied.

Page 1/1	No.	Rev:	Date:
	T01	00	Dec.06,2024

COAT SIZE DIMENSIONS



Tolerance: ±2.0 cm

Unit: cm

Units	Size	M	L	XL	2XL
A	Body Length	75	78	81	84
B	Half Chest	60	62	64	66
C	Sleeve Outseam	58	58	60	60

